



## Bedienungsanleitung / Handbuch / Datenblatt

**Sie benötigen einen Reparaturservice für Ihren Etikettendrucker  
oder suchen eine leicht zu bedienende Etikettensoftware?**

**Wir helfen Ihnen gerne weiter.**

**Ihr Partner für industrielle Kennzeichnungslösungen**



**ETIKETTEN-  
DRUCKER**



**REPARATUR-  
SERVICE**



**VERBRAUCHS-  
MATERIALIEN**



**AUTOMATISCHE  
ETIKETTIERUNG**



**SCHULUNG &  
SUPPORT**



**BARCODESCANNER  
DATENERFASSUNG**



**EINZELSOFTWARE INDIVIDUELLE LÖSUNGEN  
EINFACHE BEDIENBEREICHEN**

**Drucksysteme Janz & Raschke GmbH**

Röntgenstraße 1

D-22335 Hamburg

Telefon +49(0)40 – 840 509 0

Telefax +49(0)40 – 840 509 29

[kontakt@jrdrucksysteme.de](mailto:kontakt@jrdrucksysteme.de)

[www.jrdrucksysteme.de](http://www.jrdrucksysteme.de)



## Bedienungsanleitung / Handbuch / Datenblatt

### **Maßgeschneiderte Lösungen für den Etikettendruck und die Warenkennzeichnung**

Seit unserer Gründung im Jahr 1997, sind wir erfolgreich als Partner namhafter Hersteller und als Systemintegrator im Bereich der industriellen Kennzeichnung tätig.



#### **Unser Motto lautet:**

So flexibel wie möglich und so maßgeschneidert wie nötig.

Ich stehe mit meinem Namen für eine persönliche und kompetente Beratung. Wir hören Ihnen zu und stellen mit Ihnen eine Lösung zusammen, die Ihren individuellen Anforderungen entspricht. Für Sie entwickeln unsere erfahrenen Techniker und Ingenieure neben Etikettiermaschinen, maßgeschneiderte Komplettlösungen inklusive Produkthandling, Automatisierungstechnik und Softwarelösung mit Anbindung an Ihr Warenwirtschaftssystem.

Ich freue mich von Ihnen zu hören.

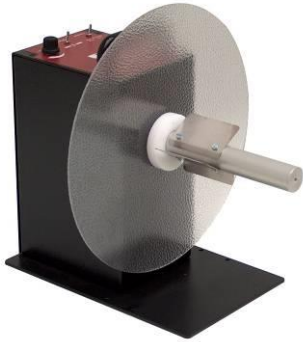
#### **Bis dahin grüßt Sie**

Jörn Janz

#### **Hier finden Sie Ihren Ansprechpartner:**

<http://www.jrdrucksysteme.de/kontakt/>

## "CAT" Heavy-Duty Label Rewinders



**CAT-3-STANDARD**

LABELMATE's Constant Adjustable Torque™ ("CAT") technology has made the silent, easy-to-use CAT-3 the "Industry Standard" Label Rewinder. There are no awkward troublesome belts or clutches.

The **CAT-3-STANDARD** handles labels up to 155 mm wide and will wind a roll of labels up to a 300 mm diameter. Torque and Direction are fully controllable from the Control Panel. Dual torque ranges provide plenty of power for use with a LABELMATE Slitter, too.

For wider labels up to 255 mm (10"), choose the **CAT-3-10-INCHES**.

Model **CAT-3-ACH** includes an Adjustable Core Holder that accepts any core size from 25 mm to 101 mm in diameter and up to 155 mm in width.

The optional Adjustable Paper Guide APG-CAT with movable arm can be installed in minutes on the base of the CAT-3-ACH or CHUCK. This inexpensive accessory guides the outer edge of the label roll as it's being rewound to ensure even roll alignment.

## Rewinders with Constant Adjustable Torque.

- *All models are bi-directional.*
- *Speed up to 125 cm/sec.*
- *External Halt Control.*
- *5- Years Parts and Labour Limited Warranty.*



Specifications are subject to change without notice. Data CAT 09/2017

The **CAT-3-CHUCK** includes LABELMATE's durable "Quick-Chuck"™ quick-locking Core Chuck, permitting the fastest loading and unloading of cores and label rolls. The CAT-3-CHUCK is ideal for label slitting applications, high-volume production environments, or anywhere the ultimate convenience in Rewinders is desired. The CAT-3-CHUCK is available for 38-, 40-, 44-, 70, 76- and 100 mm cores

The **CAT-40G** is gear motor driven for more torque. It accepts bigger rolls with a diameter up to 400 mm.

It is equipped with the LABELMATE "Quick-Chuck"™ quick-locking Core Chuck.

The **CAT-3-TA** is a CAT-3 with tension arm specially engineered for applications that require fixed web tension. The TA is available for all models of CAT-3.

**IMPORTANT NOTE:** The CAT-3-TA can be also be used as a regular CAT-3 with the same features.

Rugged, heavy-gauge steel construction allows your CAT-3 / CAT-3-TA Rewinder to be simply set in place. Special anti-slip feet

keep the unit from moving. The CAT-3 handles any rewind job and with its "HIGH" torque range can also power the LABELMATE S-100 or S-200 Label Slitters. Reliable, high quality and maintenance-free.



**CAT-3-TA-ACH with APG**



**CAT-40G-TA**

P/N	MODEL	DESCRIPTION	LABEL WIDTH (mm)	ROLL DIAM. (mm)	SPEED * (cm/sec)
<b>LMR004</b>	<b>CAT-3-STANDARD</b>	The 'Industry Standard' Heavy-duty Label Rewinder. 76mm standard.* Size: W x D x H: 300 x 350 x 320 mm.	155	300	125
<b>LMR005</b>	<b>CAT-3-ACH</b>	CAT-3 with an Adjustable Core Holder for any core size from 25 to 101mm in diameter. With inner flange. Use APG-CAT if you wish to also guide the outer edge of your label. Size: W x D x H: 280 x 310 x 310 mm.	155	280	125
<b>LMR006</b>	<b>CAT-3-CHUCK</b>	The industry standard Heavy-duty Label Rewinder with an easy-loading 'Quick-Chuck'. Ideal for production work. 76mm standard.* Size: W x D x H: 300 x 385 x 320 mm.	170	300	125
<b>LMR007</b>	<b>CAT-3-10-INCHES</b>	CAT-3 for labels up to 255mm wide. 76mm standard; 38, 40, 44 or 70mm on request. Size: W x D x H: 300 x 455 x 320 mm.	255	300	125
<b>LMR008</b>	<b>CAT-3-1-INCH</b>	CAT-3 for 25.4mm diameter cores. Size: W x D x H: 220 x 350 x 280 mm.	155	220	125
<b>LMR009</b>	<b>CAT-40G</b>	Gear motor driven. Tight rewind up to 400mm. 76mm 'Quick-Chuck' standard.* Size: W x D x H: 400 x 450 x 460 mm.	170	400	38

\* The **CAT-3-CHUCK, Standard, CAT-40 and 10-Inches** are available for 38-, 40-, 44-, 70-, 76- and 100 mm diameter cores.

P/N	MODEL	DESCRIPTION	LABEL WIDTH (mm)	ROLL DIAM. (mm)	SPEED * (cm/sec)
<b>LMR010</b>	<b>CAT-3-TA-STANDARD</b>	Same features as CAT-3-STANDARD but with Tension Arm.	155	300	125
<b>LMR011</b>	<b>CAT-3-TA-ACH</b>	Same features as CAT-3-ACH but with Tension Arm.	155	280	125
<b>LMR012</b>	<b>CAT-3-TA-CHUCK</b>	Same features as CAT-3-CHUCK but with Tension Arm.	170	300	125
<b>LMR013</b>	<b>CAT-3-TA-10-INCHES</b>	Same features as CAT-3-10-INCHES but with Tension Arm.	255	300	125
<b>LMR014</b>	<b>CAT-3-TA-1-INCH</b>	Same features as CAT-3-1-INCH but with Tension Arm.	155	220	125
<b>LMR015</b>	<b>CAT-40G-TA</b>	Same features as CAT-40G but with Tension Arm.	170	400	32

\* **SPEED:** The indicated speeds are the maximum speeds at beginning of a 76mm core roll.

**MAXIMUM LABEL ROLL WEIGHT:**

**STANDARD: 8Kg. - 10-INCHES: 10Kg. - ACH: 7Kg. - CHUCK: 8Kg. - CAT-40G: 14Kg**

Power: 220/240-vac 50-Hz. 120-vac 60-Hz power supply is also available.

### LABEL REWINDERS OPTIONS

P/N	MODEL	DESCRIPTION
<b>LMX444</b>	<b>APG-CAT</b>	Optional Adjustable Paper Guide For CAT-3(-TA)-ACH or CAT-3(-TA)-CHUCK. Guides the outer edge of the label web to ensure an even roll edge.
<b>LMX244</b>	<b>LTO</b>	Low Torque Option. For tension sensitive printers (Inkjet). Factory installed.
<b>LMX276</b>	<b>FOOT SWITCH</b>	Foot Switch to start and stop the CAT-3 or CAT-3-TA.

All models are bi-directional. **Shipping Weight:** Approx. 11 to 14 Kg.



**Labelmate**  
Chaussée de Ruisbroek 290  
1620 Drogenbos (Belgium)

+32 2 375 69 60  
brussels@labelmate.com  
BTW BE 0674 877 993

ING BELGIUM  
IBAN BE89 3630 6607 1285  
BIC BBRUBEBB

[labelmate.com](http://labelmate.com)