

Bedienungsanleitung / Handbuch / Datenblatt

**Sie benötigen einen Reparaturservice für Ihren Etikettendrucker
oder suchen eine leicht zu bedienende Etikettensoftware?**

Wir helfen Ihnen gerne weiter.

Ihr Partner für industrielle Kennzeichnungslösungen



**ETIKETTEN-
DRUCKER**



**REPARATUR-
SERVICE**



**VERBRAUCHS-
MATERIALIEN**



**AUTOMATISCHE
ETIKETTIERUNG**



**SCHULUNG &
SUPPORT**



**BARCODESCANNER
DATENERFASSUNG**



**EINZELSOFTWARE INDIVIDUELLE LÖSUNGEN
EINFACHE BEDIENBEREICHEN**

Drucksysteme Janz & Raschke GmbH

Röntgenstraße 1

D-22335 Hamburg

Telefon +49(0)40 – 840 509 0

Telefax +49(0)40 – 840 509 29

kontakt@jrdrucksysteme.de

www.jrdrucksysteme.de



Bedienungsanleitung / Handbuch / Datenblatt

Maßgeschneiderte Lösungen für den Etikettendruck und die Warenkennzeichnung

Seit unserer Gründung im Jahr 1997, sind wir erfolgreich als Partner namhafter Hersteller und als Systemintegrator im Bereich der industriellen Kennzeichnung tätig.



Unser Motto lautet:

So flexibel wie möglich und so maßgeschneidert wie nötig.

Ich stehe mit meinem Namen für eine persönliche und kompetente Beratung. Wir hören Ihnen zu und stellen mit Ihnen eine Lösung zusammen, die Ihren individuellen Anforderungen entspricht. Für Sie entwickeln unsere erfahrenen Techniker und Ingenieure neben Etikettiermaschinen, maßgeschneiderte Komplettlösungen inklusive Produkthandling, Automatisierungstechnik und Softwarelösung mit Anbindung an Ihr Warenwirtschaftssystem.

Ich freue mich von Ihnen zu hören.

Bis dahin grüßt Sie

Jörn Janz

Hier finden Sie Ihren Ansprechpartner:

<http://www.jrdrucksysteme.de/kontakt/>

MAINTENANCE:

Your UCAT-S requires no maintenance.

Product Limited Warranty

All Labelmate Products are warranted to the original end-user customer to be free from defects in materials and workmanship. If it is determined by Labelmate that a product has failed under the terms of this warranty, the product will be repaired or replaced at no charge to the customer. Labelmate reserves all rights to determination of coverage and liability under this warranty. The warranty period for all new Labelmate products is outlined below:

Warranty Period	Products Covered
5 years	Label Rewinders Label Unwinders
3 years	Label Counters (mechanical parts only) Label Slitters (mechanical parts only) Label Dispensers Printer Mechanisms
1 year	Power Supply Modules Counter modules Encoders Any products not specified above.

The warranty period for all products starts on the date purchased by the original end-user customer. Warranty coverage is not transferable with ownership and will terminate immediately upon rental, resale or any other change in ownership. This warranty does not cover repair to any product which is damaged, has been modified, is missing parts, or has been opened or repaired by any unauthorised person. Use of any unauthorised accessory or attachment will void coverage. Purchase documentation should be retained for coverage verification.

In the event your product requires service, please contact the distributor you bought the product from. The customer assumes responsibility for all cost and risk incurred in transport for service.

Labelmate makes no other warranty of any kind expressed or implied, or to suitability or fitness for a particular purpose. No other person, agent or reseller is authorised to give any warranties on behalf of Labelmate. Any obligation to warranty other than that specifically addressed above is hereby disclaimed.

LABELMATE LLC

69 AVENUE ALPHONSE XIII, 1180 BRUSSELS, BELGIUM

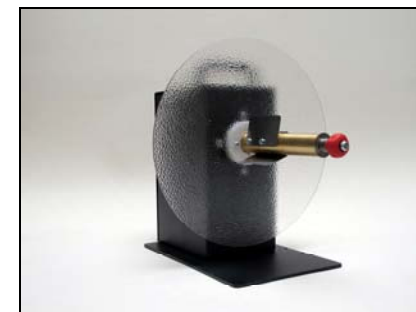
TEL: +322.375.69.60 – FAX: +322.375.38.96

brussels@labelmate.com

www.labelmateeurope.com

UCAT-S

Economy Label Unwinder with Adjustable "Wearless" Braking



- ***Low-cost economy Unwinder***
- ***Adjustable Braking***
- ***Non-Powered***

Remove all parts from the shipping container and verify contents.

PACKAGE CONTENTS:

- ***User Manual (this document)***
- ***UCAT-S Unit***
- ***Plastic bag with three (3) vanes and 6 screws***
- ***One 300mm Plastic Inner Flange Plate***

Retain the Shipping Container and Packaging for Storage and Transport

SPECIFICATIONS:

Weight of the machine: 6Kg.

Max. Label Roll Weight: 6Kg.

Max. Label Roll Diam: 300mm.

IMPORTANT INFORMATION:

- This product is a label unwinder. It is only to be used to unwind labels of the recommended dimensions and weight in an indoor, dry environment.
- The machine is to be used on a flat surface, if the surface is not flat; it is to be fixed using the holes in the base plate.
- The ambient light of the working area needs to be sufficient to avoid any risk.
- The unwinder can be used in ambient temperatures of +2°C to 40°C.

SET-UP:

1. Slide the Flange Plate onto the brass shaft
2. Install the three (3) metal vanes onto the shaft. The side with the 3 holes for the screws has to be facing the rotation direction.
3. Position the Plastic Flange Plate even with the inside end of the Shaft so there is clearance between the Flange and the Chassis.
4. Tighten the screw in the Hub until it is snug.
5. **CAUTION: AVOID ACCIDENTS. THE UCAT-S WEIGHS OVER 6KG, SO CHOOSE ONLY A STURDY SURFACE ON WHICH TO SET THE UNIT.**

Your UCAT-S is now ready for use.



WARNING!

**This Product is for indoor use only.
Not for use in wet locations.**

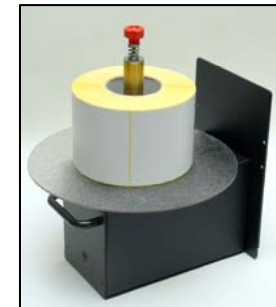
LABEL UNWINDING:

The UCAT-S is bi-directional. It can unwind labels in either direction.

1. Slide the roll of labels to be unwound / slit onto the shaft of the UCAT-S and all the way up against the Plastic Flange Plate.
2. Thread the labels into the printer / slitter as required
3. Begin the printing operation and observe that the labels are feeding correctly into your printer / slitter. If necessary, adjust the position of the UCAT-S so the alignment with the printer / slitter is appropriate to correctly feed the labels.
4. Braking is adjusted by turning the red knob.

LOADING HEAVY ROLLS:

In order to ease the loading of heavy rolls on the UCAT-S, the unit can be placed on its back. Slide the roll on the shaft and then reposition the unit straight.



OPTIONAL:

The tension is adjustable via the red knob. This knob can be replaced with a regular M5 screw so the adjustment can only be made with a wrench, in order to prevent the operator to change the brake setting.