



Bedienungsanleitung / Handbuch / Datenblatt

**Sie benötigen einen Reparaturservice für Ihren Etikettendrucker
oder suchen eine leicht zu bedienende Etikettensoftware?**

Wir helfen Ihnen gerne weiter.

Ihr Partner für industrielle Kennzeichnungslösungen



**ETIKETTEN-
DRUCKER**



**REPARATUR-
SERVICE**



**VERBRAUCHS-
MATERIALIEN**



**AUTOMATISCHE
ETIKETTIERUNG**



**SCHULUNG &
SUPPORT**



**BARCODESCANNER
DATENERFASSUNG**



**EINZELSOFTWARE INDIVIDUELLE LÖSUNGEN
EINFACHE BEDIENBEREICHEN**

Drucksysteme Janz & Raschke GmbH

Röntgenstraße 1

D-22335 Hamburg

Telefon +49(0)40 – 840 509 0

Telefax +49(0)40 – 840 509 29

kontakt@jrdrucksysteme.de

www.jrdrucksysteme.de



Bedienungsanleitung / Handbuch / Datenblatt

Maßgeschneiderte Lösungen für den Etikettendruck und die Warenkennzeichnung

Seit unserer Gründung im Jahr 1997, sind wir erfolgreich als Partner namhafter Hersteller und als Systemintegrator im Bereich der industriellen Kennzeichnung tätig.



Unser Motto lautet:

So flexibel wie möglich und so maßgeschneidert wie nötig.

Ich stehe mit meinem Namen für eine persönliche und kompetente Beratung. Wir hören Ihnen zu und stellen mit Ihnen eine Lösung zusammen, die Ihren individuellen Anforderungen entspricht. Für Sie entwickeln unsere erfahrenen Techniker und Ingenieure neben Etikettiermaschinen, maßgeschneiderte Komplettlösungen inklusive Produkthandling, Automatisierungstechnik und Softwarelösung mit Anbindung an Ihr Warenwirtschaftssystem.

Ich freue mich von Ihnen zu hören.

Bis dahin grüßt Sie

Jörn Janz

Hier finden Sie Ihren Ansprechpartner:

<http://www.jrdrucksysteme.de/kontakt/>

TEKLYNX®
SENTINEL™

SETTING THE STANDARD



Setting the Standard
TEKLYNX
BAR CODE SOFTWARE



Back-up Server

The information contained in this guide is not of a contractual nature and may be subject to change without prior notice.

The software described in this guide is sold under a license agreement. The software may be used, copied or reproduced only in accordance with the terms of the agreement.

No part of this guide may be copied, reproduced or transmitted in any form, by any means or for any purpose other than the purchaser's own use without the written permission of Teklynx Newco SAS.

©2018 Teklynx Newco SAS,
All rights reserved.

Table of Contents

About this manual	iii
Typographical conventions	iii
Chapter 1: Overview	1-1
Chapter 2: Installation	2-3
Chapter 3: Configuration	3-5
Status	3-5
Configuration	3-6
Email	3-7
Folders	3-8
Chapter 4: Process Description	4-9
Chapter 5: Licensing	5-11
The SBS Pack	5-11
The Standard Path	5-11

About this manual

Typographical conventions

This manual distinguishes between different types of information using the following conventions:

- Terms taken from the interface itself, such as commands, appear in **bold**.
- Keys appear in small caps, for example: "Press the SHIFT key".
- Numbered lists mean there is a procedure to follow.
- When the conjunction -or- appears next to a paragraph, it means there is the choice of another procedure for carrying out a given task.
- When a menu command contains submenus, the menu name followed by the command to select appear in bold. Thus, "Go to **File > Open**" means choose the **File** menu then the **Open** command.



This symbol highlights warnings and other important information on how a particular command or procedure works.



Following this symbol you will find hints and tips for optimizing tasks, speeding up commands, and so on.

CHAPTER 1

Overview

The SENTINEL BackUp Server (**SBS**) application allows a secondary server to act as a backup in the case of failure of the primary server.

The application manages the duplication of the last known configuration from the primary server to the secondary server.

When the primary server shuts down, after a hardware failure or after a manual stop for a maintenance operation, the secondary server takes over and becomes the primary server.

Details :

When the SBS service is started on a PC it begins by verifying if the SBS service is already active on the second PC (attempt of a TCP/IP connection with the alternate SBS server). If it is active, it runs as a secondary server. Otherwise it runs as a primary server.

When the primary SBS service stops (after a shut down or deliberate stop for maintenance or an update), the secondary SBS detects the loss of connection on the TCP/IP port and runs as a primary server. It opens a TCP/IP port as a server and starts the sentinels who were activated on the previous primary server.

To switch the secondary SBS into primary, it is enough to stop the SBS service of the primary server.

To be compatible with the Backup system, the configuration must meet the following requirements :

- Both PCs have to be on the same network domain.
- Their respective IP addresses must be fixed (no automatic allocation).
- The installation of SENTINEL and the other associated applications must be made in identical directories.
- Both SENTINEL services must be configured to work in accounts having identical rights, or in the same account. Their starting up must not be set-up to be automatic (they are forced in manual mode by SBS).
- Every machine has to know the IP address of its double (this information is to be specified in the configuration window of the SBS).
- The sentinels will have to use the file capture plug-in on a network shared directory, to ensure the proper working of the system.

CHAPTER 2

Installation

SBS must be installed on the two PCs after the Sentinel Application has been installed.

It is automatically done in the same installation folder as the SENTINEL product.

After the installation, you must ensure that the Sentinel service (Label Print Manager) is not set to run automatically (the execution of the Sentinel service must be controlled by the SBS).

Note

Once launched, the SBS service resets the SENTINEL service's launch method as manual.

By default, the SBS service is set to the manual starting mode. To make it available at boot time, the configuration must be changed in the Windows Service Manager.

CHAPTER 3

Configuration

The Sentinel Backup Server is a Windows service. It can be set to automatic start-up.

If it is launched by a user in a Windows session with the **-cfg** argument, it produces a dialog box for its configuration. The window contains four tabbed windows : **Status**, **Connection**, **E-mail**, and **Folder**.

Status

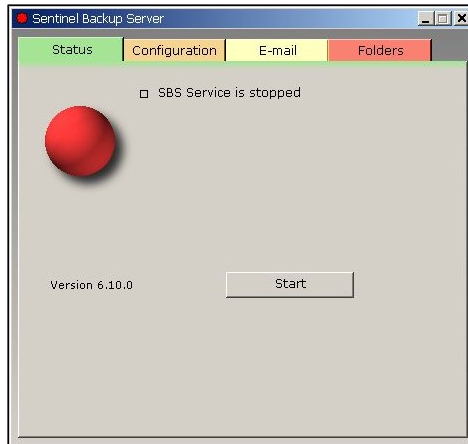


Figure 1 Status tab

The **status** tab shows the state of the Backup service

(stopped, running as primary or secondary) and features a button for the starting or stopping of the service. The logo on the left, as well as the colour of the icon in the caption and in the Windows task bar will reflect the status.

Configuration

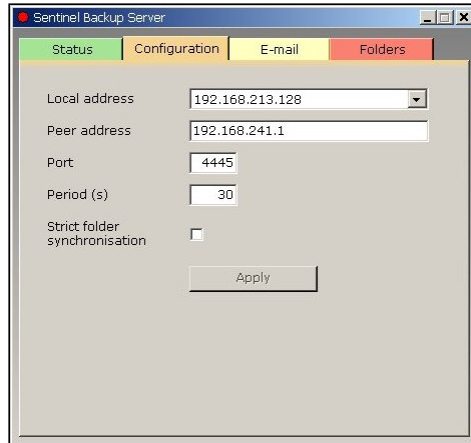


Figure 2 Configuration tab

The **Configuration** tab allows the user to set the local address to use (there is only one unless you have a network card with multiple ports), the address of the peer server, the communication port and the updating period in seconds.

These settings are to be defined on both servers.

Strict Synchronization:

By default the synchronization mechanism verifies that files found on the primary server are duplicated on the secondary server.

The strict sync verifies also that files NOT FOUND on the primary server are DELETED on the secondary server.

In both case, the mechanism only checks the SENTINEL setting folder and the optional folders added in the Folders tab.

Email

This tab allows defining the emailing parameters to have an automatic email sent on primary server failure.

It is the secondary server that will send the email when it takes over.

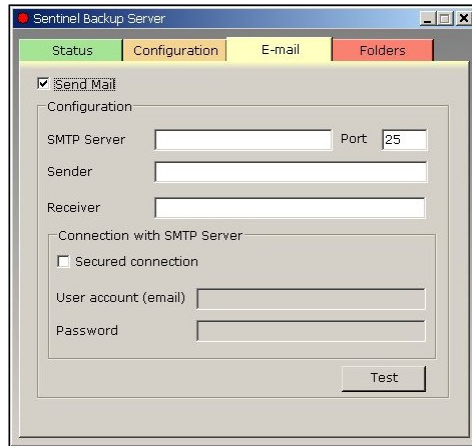


Figure 3 Email tab

Folders

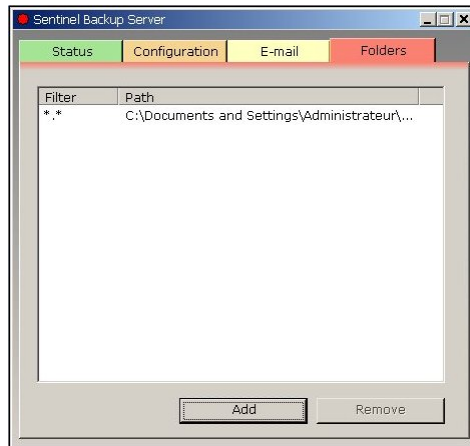


Figure 4 Folders tab

The **Folders** tab lets the user define a set of folders and filters to ensure the replication of custom files on the secondary server.

These settings are passed to the secondary server when it connects. There is no need to enter them on the secondary.



Only the first tab is available when the SBS service is active.



While thermal printers installed through the Labelling plug-ins will be correctly duplicated from primary to secondary, Windows printers cannot be created without the installation of their driver. These printers will need to be installed on the secondary. You can also use the PrintMig utility available for download on Microsoft's site.

CHAPTER 4

Process Description

When the SBS service starts, it first finds out if it is running as the primary or secondary server by trying to contact the other server through a TCP/IP connection (port 4445 by default).

- if the peer address is not provided, the start-up fails.
- if the other server answers, SBS works in secondary mode
- if the opposite server does not answer, it runs as primary and opens a TCP/IP socket server process.

In summary, the primary SBS opens a TCP/IP port as a server.

The secondary SBS connects to this port as a client.

Periodically (the period in seconds is user definable), and as long as a TCP/IP client is connected, the primary server proceeds to the update of the secondary server going through the following steps :

- 1** Execution of the updating scripts. They generate a list of files modified since last check (all files are considered modified on the first cycle).
- 2** Listing the active sentinels.
- 3** Sending the two lists and the modified files content to

the secondary PC.

4 System suspends until next period.

Note

During a user stop of the primary backup server, steps 1 to 3 are also executed.



In the case where both SENTINEL servers are started simultaneously and the SBS service is configured in automatic launch mode, SBS may start in primary mode on both servers.

This type of situation may produce itself in the case where both servers are on similar machines which use the same failing power source.

With this type of configuration, it is important to verify after re-launching the servers that the Backup service on the main server is working in primary mode, and that the Backup service on the Backup server is in secondary mode.

To do this, you must start the SBS service configuration interface on the secondary server.

Verify that the status of the service is started and that it is working in secondary mode.

If this is not the case, stop the service using the Stop button on the configuration interface.

Wait for it to stop and re-start the service using the Start button.

The service will then work in secondary mode.

CHAPTER 5

Licensing

The SBS Pack

Implementing a secured solution built around the use of the SENTINEL BackUp Server product makes available 2 license types:

- The SENTINEL product license, installed on your main server
- The SBS product license, installed on your back-up server

The first type of license gives access to all of the functionalities available with your SENTINEL product. The second type of license forbids the launching of sentinels if the back-up server on which the license is installed launches directly in primary mode.

However, if SENTINEL is started by SBS after the primary server has failed, all operations are allowed.

For the reasons listed above, the SENTINEL service should not be stopped and restarted on the backup server, otherwise the above mentioned limitations would apply. If the backup machine continues in primary mode for a long time and that the SBS license limitations do not meet your requirements, the server roles can be switched by installing the standard SENTINEL key on the backup server turning it into the main server.

To guarantee the proper execution of the secured solution, the administrator must ensure that the server on which the

SENTINEL BackUp Server key is installed is just a back-up server; it should only be used to ensure the smooth running of the service when the main server is not available.



France
+33 (0) 562 601 080

Germany
+49 (0) 2103 2526 0

Singapore
+65 6908 0960

United States
+1 (414) 837 4800

Copyright 2018 Teklynx Newco SAS. All rights reserved. TEKLYNX, CODESOFT and SENTINEL are trademarks or registered trademarks of Teklynx Newco SAS or its affiliated companies. All other brands and product names are trademarks and/or copyrights of their respective owners.

www.teklynx.com

